



Wundfix System

Product Description

WoundFix System

The ANIVET® WoundFix System is a sterile, single-use product for wound care, consisting of:

- Two triple base units
- Two foam pads
- Three tension straps

The base units and foam pads can be adjusted based on the wound size. They can be cut along the marked lines for smaller wounds, creating single or double base units, or cut elsewhere as necessary. For larger wounds, multiple base units can be combined.

The ANIVET® WoundFix System should be attached to the skin invasively using sutures. Each base unit has a long slot for the tension strap and multiple holes for suture material. The base units are made of polypropylene (PP), and the tension straps are made of nylon/stainless steel.

Intended Use

Invasive (With Sutures):

- Suitable for wounds under significant tension that prevent primary closure. The wound edges can be gradually approximated until the wound is fully (primarily) closed.
- Useful for tension relief in tension relieving suture patterns.
- Facilitates skin stretching as a pre- and postoperative measure for tumor removal, ensuring the wound can be closed primarily after excision.
- Enables dressing application in areas where anatomical constraints normally prevent bandaging (e.g., neck, upper limb).

Specific Indications for Invasive Use:

- Closure of large wounds with significant tension.
- Wound closure where skin loss or retraction prevents edge-to-edge apposition.
- Approximation of wound edges over poorly vascularized structures such as tendons and bones or in secondary healing wounds.
- Improved aesthetic outcomes as an alternative to skin grafts by mobilizing skin and subcutaneous tissue.
- Preoperative skin expansion to prepare for skin excision (e.g., skin lesions).

Instructions for Use

Preparation for Using the ANIVET® WoundFix System:

- Estimate the expected tension on the skin and choose the appropriate number of base units.
- Cut the base units to match the wound size if necessary.
- Avoid excessive shear forces when using the system.
- Apply gentle, gradual tension when approximating tissues.

Important Notes:

- Do not use the ANIVET® WoundFix System in the following cases:
 - Known allergies to adhesives/tapes.
 - Thin, sensitive skin.
 - Uncooperative patients.

Step-by-Step Instructions

1. Prepare the Wound Area:

Shave the surrounding area, disinfect and dry the skin before application.



2. Attach Base Units:

- Remove the adhesive backing from the base units. Place a base unit on each side of the wound, approximately 3-4 cm from the wound edges.
- Ensure the long slot of the base unit (for the tension strap) is as close as possible to the wound edge in high-tension injuries.



3. Fixation and Suturing:

- Initially, attach the base units to the skin with single-cross stitches.



- For tension relief sutures, use a sharp needle and monofilament suture material (2 USP). Pass the needle through one of the designated holes in the base unit, ensuring it engages the underlying subcutaneous tissue on both sides of the wound. The wound can be sutured using a horizontal or vertical mattress suture or another tension-relieving technic.



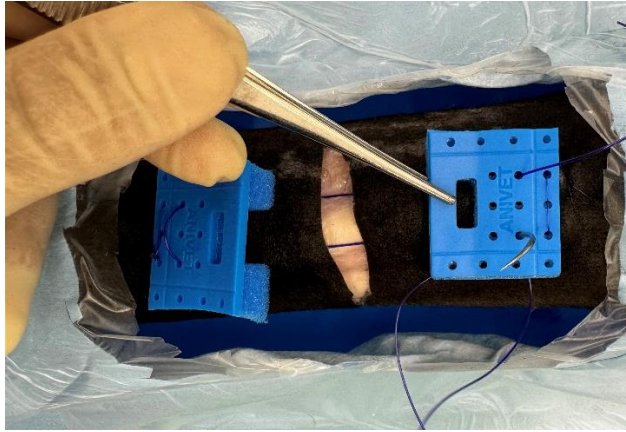
- The needle should exit through the base unit on the opposite side of the wound.



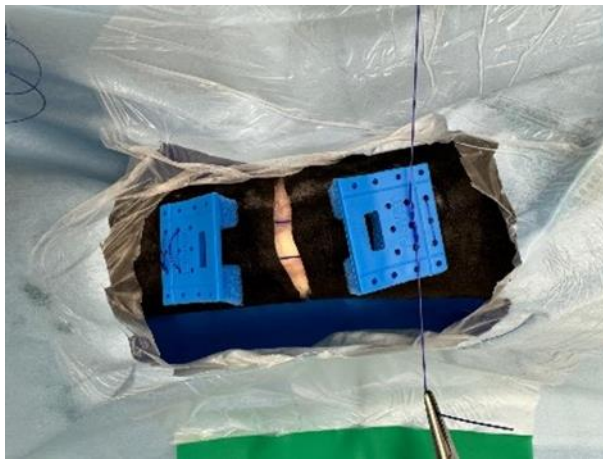
- Afterward, the needle should be passed again through the base unit



- then through the wound, and once more through the base unit on the other side of the wound.



- Securely knot the suture material.



- Close the wound using individual stitches or an intradermal suture (cutting needle, monofilament thread with a strength of 2-0 USP or 0 USP).

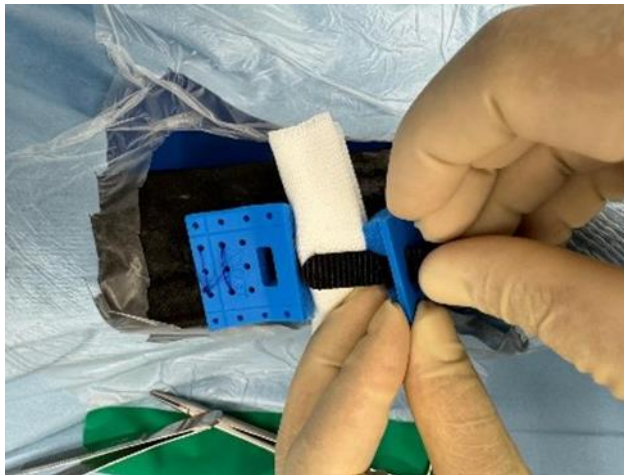


- Then apply the wound dressing



4. Apply Tension Straps:

- Insert the tension strap through the slot in one base unit, threading it into the opposite base unit.





5. Protect the System:

- Optionally, wrap the system circumferentially with an elastic bandage, ensuring it is not too tight to avoid skin necrosis under the attachment plates.

6. Removal:

- Generally, remove the system after 6 days, or after 10 days for wounds under significant tension.